

jexcel plugin user manual v0.2

Contents

Introduction	1
Installation	1
Loading a table from an Excel spreadsheet	1
Data source properties	2
General tab (default)	2
Advanced tab	3
Loading a layer from an Excel Spreadsheet	4
Data source properties	4
General tab (default)	4
Advanced tab	5
Exporting a table to Excel spreadsheet format	6

Introduction

The jexcel plugin add to gvSIG the following functionalities:

- Load Microsoft Excel spreadsheets as tables.
- Load Microsoft Excel spreadsheets as layers.
- Export a table to Excel spreadsheet format.

It supports the following Excel spreadsheet versions:

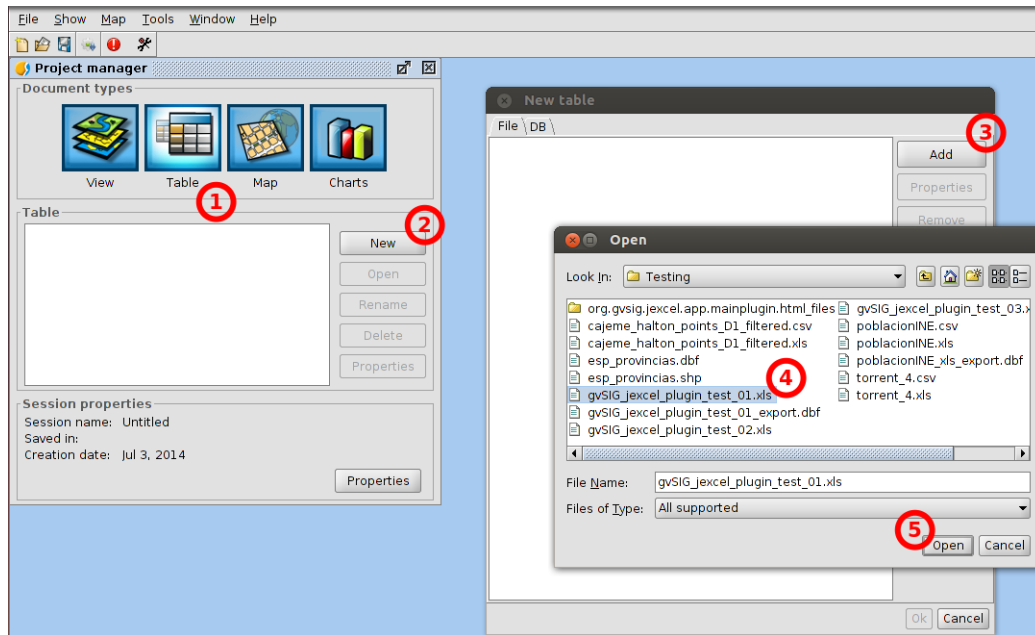
- Reading: Excel 95, 97, 2000, XP, and 2003 workbooks.
- Writing: Excel 2000

Installation

(TODO)

Loading a table from an Excel spreadsheet

From the gvSIG project manager, select the "Table" document (1) and click on "New" (2). In the "New table" window the "File" tab is selected by default. Click on "Add" (3) and find the Excel file that contains the spreadsheet you want to load (4). Finally click on "Open" (5).

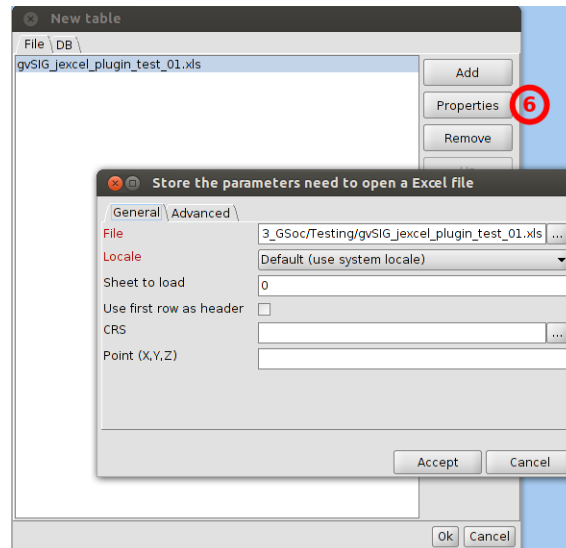


Once the file appears in the “New table” window, click on “Properties” (7) in order to set up the following parameters:

Data source properties

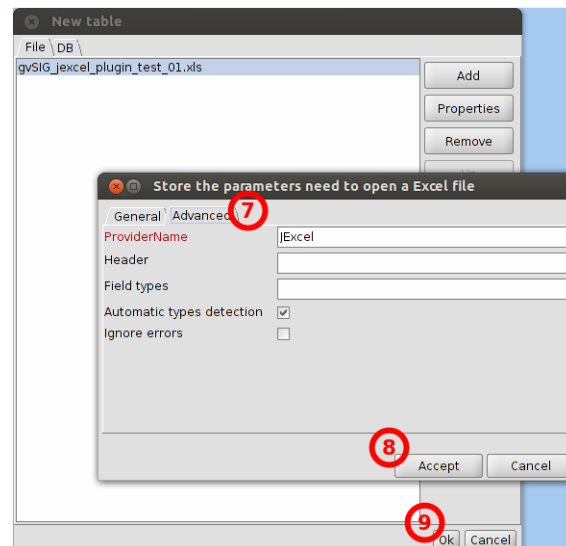
General tab (default)

- **File:** File path.
- **Locale:** Localization configuration. This determines the characters used as decimal and thousands separators.
- **Sheet to load:** Position within the spreadsheet file of the sheet that we want to load. First position corresponds with the number "0", second with "1" and so on.
- **Use first row as header:** In case this option is checked it will consider the first row values as the field names.
- **CRS:** In case the sheet contains coordinates this parameter sets its Coordinate Reference System.
- **Point (X,Y,Z):** Position of the fields that contains the coordinates. It should be provided at least two fields for X,Y coordinates.

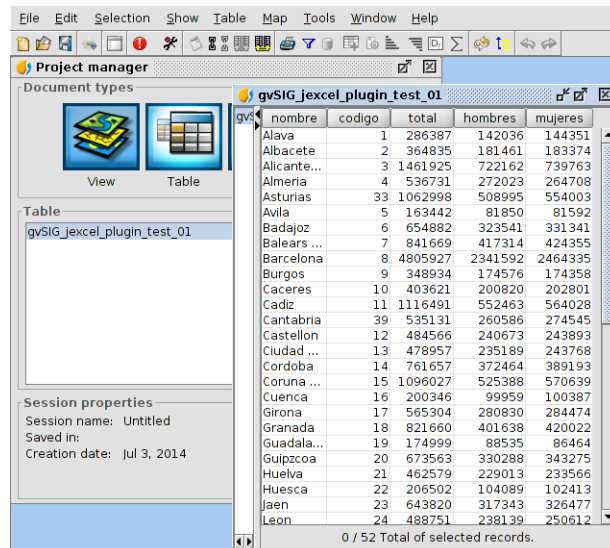


Advanced tab

- **ProviderName:** The provider name (internal use).
- **Header:** In case the sheet doesn't have a header we can define it here. We have to type the name of the fields separated by a comma.
- **Field types:** This is useful if we want to force the program to load the table with a specific field types.
- **Automatic types detection:** This options is checked by default. It tries to figure out what the field types are.
- **Ignore errors:** This option forces the program to load the table even in case it finds erros.

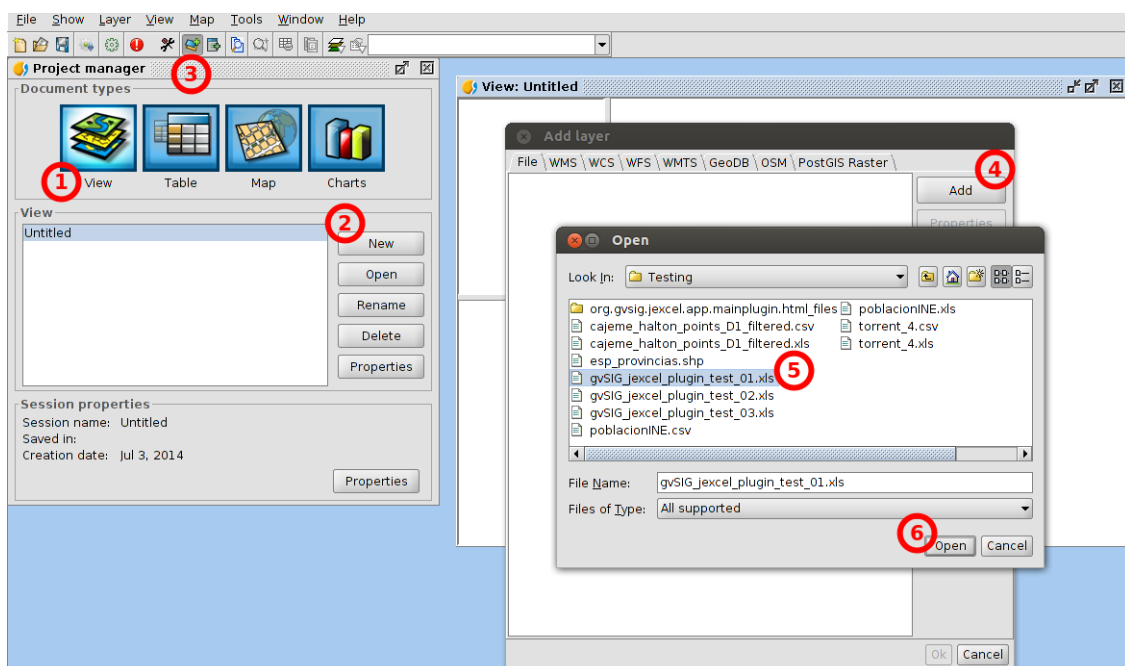


Once all the needed parameters have been set up click on “Accept” and finally on “Ok”. If everything worked fine the table should appear.



Loading a layer from an Excel Spreadsheet

From the gvSIG project manager, select the “View” document (1) and click on “New” (2). In the “Add layer” window the “File” tab is selected by default. Click on “Add” (4) and find the Excel file that contains the spreadsheet you want to load (5). Finally click on “Open” (6).



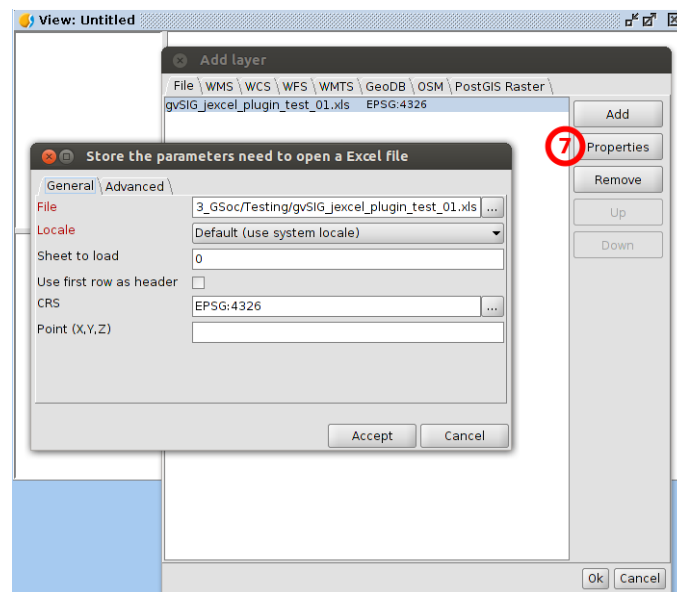
Once the file appears in the “Add layer” window, click on “Properties” (7) in order to set up the following parameters:

Data source properties

General tab (default)

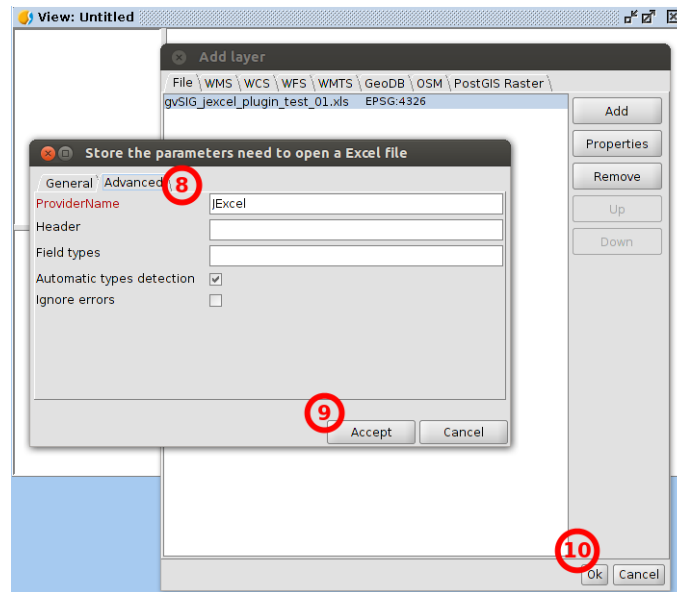
- **File:** File path.

- **Locale:** Localization configuration. This determines the characters used as decimal and thousands separators.
- **Sheet to load:** Position within the spreadsheet file of the sheet that we want to load. First position corresponds with the number "0", second with "1" and so on.
- **Use first row as header:** In case this option is checked it will consider the first row values as the field names.
- **CRS:** In case the sheet contains coordinates this parameter sets its Coordinate Reference System.
- **Point (X,Y,Z):** Position of the fields that contains the coordinates. It should be provided at least two fields for X,Y coordinates.

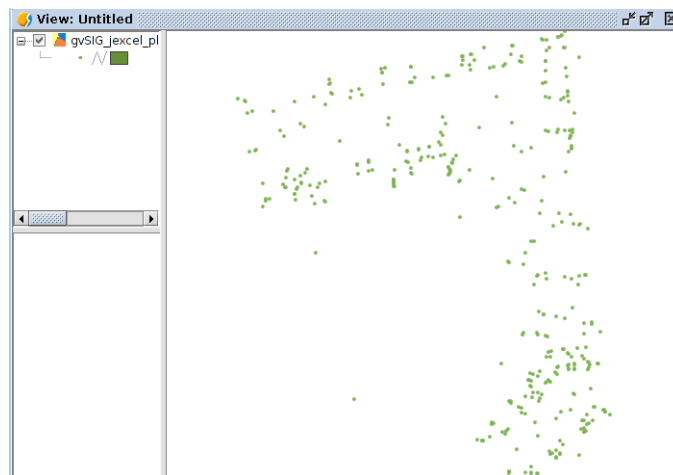


Advanced tab

- **ProviderName:** The provider name (internal use).
- **Header:** In case the sheet doesn't have a header we can define it here. We have to type the name of the fields separated by a comma.
- **Field types:** This is useful if we want to force the program to load the table with a specific field types.
- **Automatic types detection:** This option is checked by default. It tries to figure out what the field types are.
- **Ignore errors:** This option forces the program to load the table even in case it finds errors.



Once all the needed parameters have been set up click on “Accept” and finally on “Ok”. If everything worked fine the layer should appear in the view.



Exporting a table to Excel spreadsheet format

(TODO)