

# Application: gvSIG desktop - gvSIG bugs #3377

## Marker fill symbol pattern gap

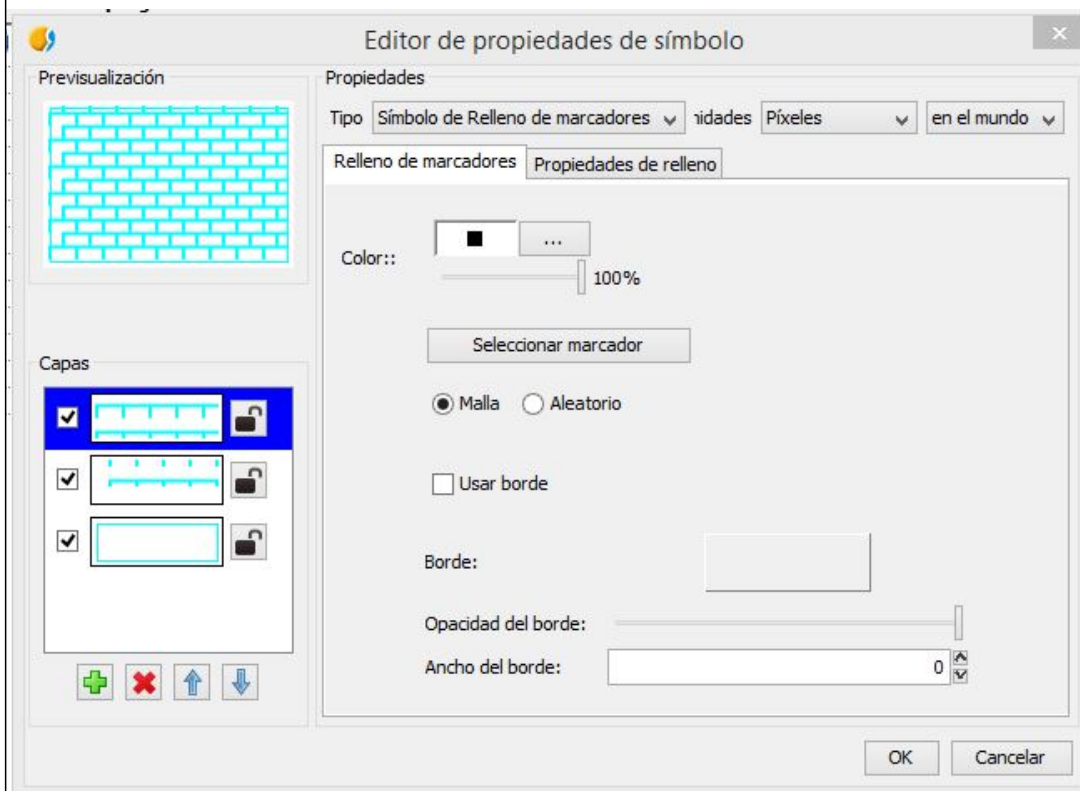
04/21/2015 11:24 AM - Javier Galán

<b>Status:</b>	New	<b>% Done:</b>	0%
<b>Priority:</b>	Normal	<b>Spent time:</b>	0.00 hour
<b>Assignee:</b>			
<b>Category:</b>	Symbology		
<b>Target version:</b>			
<b>Severity:</b>	Minor	<b>Add-on version:</b>	
<b>gvSIG version:</b>	2.1.0	<b>Add-on build:</b>	
<b>gvSIG build:</b>	2269	<b>Add-on resolve version:</b>	
<b>Operative System:</b>	Windows	<b>Add-on resolve build:</b>	
<b>Keywords:</b>		<b>Proyecto:</b>	
<b>Has patch:</b>		<b>Hito:</b>	
<b>Add-on name:</b>	Unknown		

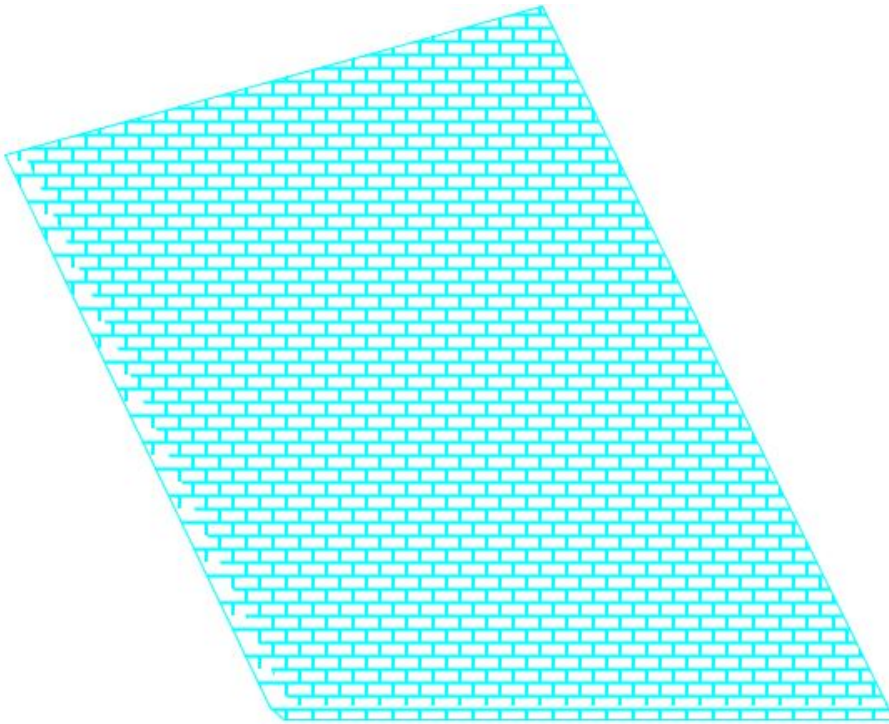
### Description

I defined a pattern using the symbol editor.

It's defined with three layers one for the border, and two for the pattern. this are defined as Marker fill symbol



When it's applied it to a feature the result is a bit strange



There's some gaps just only at the left. It's supposed to be as the righth side.

It happens with each pattern I created.

Attached the captures and the symbol.

---

### History

#1 - 10/23/2015 12:16 PM - **Álvaro Anguix**

- Category set to Symbology

### Files

---

Captura_2.JPG	66 KB	04/21/2015	Javier Galán
Captura_1.JPG	50.9 KB	04/21/2015	Javier Galán
sg_equipamientos.gvssym	15.2 KB	04/21/2015	Javier Galán